

# CBS – High Holy Day Information Packet



## Congregation Beth Shalom

500 Harrington St. STE A1,  
Corona, CA 92878

Ph: 951-734 -4033  
[www.CBSofCorona.org](http://www.CBSofCorona.org)



# Congregation Beth Shalom

500 Harrington St. STE A1, Corona, CA 92878

Mail - PO Box 2737 , Corona, CA 92878  
(951) 734-4033 [www.CBSofCorona.org](http://www.CBSofCorona.org)



**Dear Congregation Beth Shalom Family,**

In this packet is the information for the High Holy Days.

<b><i>High Holy Day Schedule</i></b>	<b><i>High Holy Day Appeal Request</i></b>
<b><i>Synagogue Etiquette at Services</i></b>	<b><i>Annual Yizkor Booklet Names</i></b>
<b><i>Additional High Holy Day Tickets</i></b>	<b><i>Security &amp; Safety Information</i></b>
<b><i>Break the Fast</i></b>	<b><i>Lunch &amp; Dinner Flyer</i></b>

We look forward to celebrating our High Holy Day Services with you on Zoom or in person at CBS, 500 Harrington St. STE A1, Corona, CA.

We thank you for your support, without which there simply wouldn't be a CBS. Honors will be given to members in good standing during the High Holy Days. It is through your membership and financial pledges that CBS can continue to serve your spiritual needs.

There will be a Mi Shebeirach read at most services. Please e-mail the names you wish to be mentioned to Jackie Williams, our Ritual Chairperson, at [sirdots@yahoo.com](mailto:sirdots@yahoo.com) or call 714-296-4079 prior to Rosh Hashanah.

We have scheduled our Rosh Hashanah lunch, Pre-Kol Nidre dinner and Break the fast. Please let us know if you want to attend the Break the Fast.

Should you have any questions, please contact a CBS representative below.

Thank You ...Bruce Rouman

Bruce Rouman, President of Congregation	951-847-4632	<a href="mailto:bjrouman@sbcglobal.net">bjrouman@sbcglobal.net</a>
Renee Miller, VP of Finance	909-228-5945	<a href="mailto:renee.miller.slp@verizon.net">renee.miller.slp@verizon.net</a>
Dennis Itzkowitz, VP of Membership	951-675-0300	<a href="mailto:denitzkowitz@att.net">denitzkowitz@att.net</a>
Jackie Williams, VP of Ritual	714-296-4079	<a href="mailto:sirdots@yahoo.com">sirdots@yahoo.com</a>



# HIGH HOLY DAY SERVICES SCHEDULE



<b>2023 Services Conducted by Cantor Bruce Shapiro</b>			
<b>Services located at CBS and on Zoom</b>			
Saturday	9-Sep	6:00 PM	S'lichot Program by Students
Saturday	9-Sep	7:45 PM	Havdalah / S'lichot Service
<b><u>ROSH HASHANAH</u></b>			
Friday	15-Sep	7:30 PM	Erev Rosh Hashanah / Shabbat
Saturday	16-Sep	9:00 AM	Rosh Hashanah, Day 1
<i>Optional Lunch together at the break - See flyer</i>			
Saturday	16-Sep	6:30 PM	Rosh Hashanah Evening
Sunday	17-Sep	9:00 AM	Rosh Hashanah, Day 2
Sunday	17-Sep	2:00 PM	Tashlich on 2nd day of RH
<b><u>YOM KIPPUR</u></b>			
<i>Optional Pre-Kol Nidre Dinner together - See flyer</i>			
Sunday	24-Sep	6:15 PM	Kol Nidre
Monday	25-Sep	9:00 AM	Yom Kippur
Monday	25-Sep	11:15 AM	Yizkor
Monday	25-Sep	3:00 PM	Yom Kippur Discussion
Monday	25-Sep	4:00 PM	Mincha-Neila
<i>Break the Fast at CBS</i>			
<b><u>SUKKOT</u></b>			
Friday	29-Sep	7:30 PM	Erev Sukkot
Sunday	1-Oct	10:00 AM	Sukkot - with Breakfast*
<i>*At the Rouman's home (963 Nottingham Dr. Corona, Ph: 951-847-4632)</i>			
<b><u>SIMCHAT TORAH</u></b>			
Saturday	7-Oct	6:15 PM	Yizkor
Saturday	7-Oct	7:00 PM	Simchat Torah /Consecration
<i>Holiday Service information contact Jackie Williams, Ph: 714-296-4079</i>			



**Congregation Beth Shalom**  
500 Harrington St. STE A1, Corona, CA 92878

Mail - PO Box 2737 , Corona, CA 92878  
(951) 734-4033    [www.CBSofCorona.org](http://www.CBSofCorona.org)

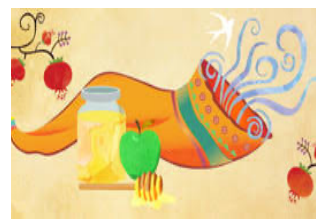




# Congregation Beth Shalom

500 Harrington St. STE A1, Corona, CA 92878

Mail - PO Box 2737 , Corona, CA 92878  
(951) 734-4033 [www.CBSofCorona.org](http://www.CBSofCorona.org)



## Synagogue etiquette while meeting inside the CBS facilities

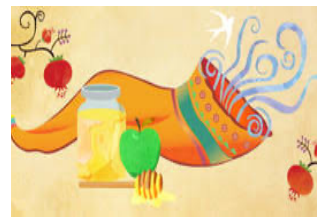
- We ask that if you have HHD prayer books, bring them.
- A reminder to bring your own Tallit to the Rosh Hashanah morning services, Kol Nidre, Yom Kippur and Saturday morning services.
- For the Kol Nidre Service, we request that you wait to don your tallit as we will be doing so as a community.
- There is NO SMOKING in or around the synagogue or facility on Shabbat/Holy Days.
- Please silence or turn off cell phones and pagers.
- Parents need to be responsible for their children.
- Please be courteous to those around you and no talking during services.
- If people are standing in prayer, please do not enter or leave, as a sign of respect.
- The doors are to remain closed to minimize disruptions and keep the room cool.
- Wearing a Kippah or Tallit is optional for women, although we take a more progressive approach and express gender equality in our ritual observances.
- Whenever the Ark is opened or the Torah scroll is lifted, the congregation is asked to stand as a sign of respect. Coming up to the bimah is an honor (kavod). One shows one's eagerness at receiving such an honor by dressing appropriately and being ready for one's honor.
- It is traditional for a person to wear a Tallit when we read from the Torah, during Rosh Hashanah mornings, Kol Nidre, Yom Kippur and Shabbat morning services. When called to the Torah for an aliyah, Torah reading, dressing/undressing or holding the Torah, you must wear both a Kippah and a Tallit (men and women).
- If you have been given an honor of an aliyah or Torah reading, be prepared to give your Hebrew or Yiddish name.



# Congregation Beth Shalom

500 Harrington St. STE A1, Corona, CA 92878

Mail - PO Box 2737 , Corona, CA 92878  
(951) 734-4033 [www.CBSofCorona.org](http://www.CBSofCorona.org)



## ADDITIONAL HIGH HOLY DAY TICKET REQUEST

Members of Congregation Beth Shalom are entitled to one ticket per adult member in your immediate family. Should you have relatives or friends wishing to attend our High Holy Day Services, **additional tickets may be available upon request for in shul seating.**

Please send me \_\_\_\_\_ extra High Holy Day tickets. **A donation of \$250 is suggested** for each ticket, unless the person is a member of another temple and has a ticket from that temple. It doesn't matter if the person is an adult family member or friend.

Amount Enclosed: \_\_\_\_\_ via:  Check or  Credit Card *(a 3% fee will be added)*

Visa/MC # \_\_\_\_\_ Expiration date: \_\_\_\_\_ CCV: \_\_\_\_\_

Billing Address ZIP Code \_\_\_\_\_

Signature \_\_\_\_\_ Date \_\_\_\_\_

Submitted By (Name /Address / Phone) :

\_\_\_\_\_  
\_\_\_\_\_  
\_\_\_\_\_

Should you have questions , please contact:

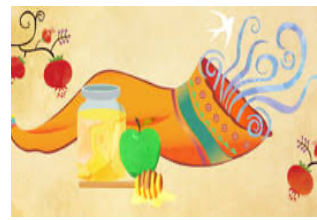
Ritual Committee Chairperson:

Jackie Williams, 714-296-4079 [sirdots@yahoo.com](mailto:sirdots@yahoo.com)

VP of Finance:

Renee Miller, 909-228-5945 [renee.miller.slp@verizon.net](mailto:renee.miller.slp@verizon.net)

# HIGH HOLY DAY APPEAL



We welcome you to our High Holy Day Services. The rabbis of old taught that the construction of the Temple was not complete until everyone had contributed to the effort. Thus, the Holy Temple, the place where our people and God met was dependent upon the good will and donations of each and every one of our ancestors.

In the same way, we are counting on the good will of each and every person who attends Congregation Beth Shalom services to support the High Holy Day Appeal.

Please take the time and select a support level and return this page with your check prior to Yom Kippur. If you are a guest during High Holy Days and received this appeal during the services, please return this page with your check at the conclusion of High Holy Day Services to CBS. We very much appreciate your support.

Name: \_\_\_\_\_

Address: \_\_\_\_\_

City, State, Zip: \_\_\_\_\_

Phone: \_\_\_\_\_

Email: \_\_\_\_\_

\$54

\$90

\$180

\$360

\$540

\$720

\$1080

\$1800

\$3600

Other Generous \$ \_\_\_\_\_

Check enclosed ( payable to "CBS" )

Credit Card (a 3% fee will be added)

Visa/MC # \_\_\_\_\_ Expiration date: \_\_\_\_\_ CCV: \_\_\_\_\_

Billing Address ZIP Code \_\_\_\_\_

Signature \_\_\_\_\_ Date \_\_\_\_\_

Mail to: Congregation Beth Shalom PO Box 2737 , Corona, CA 92878

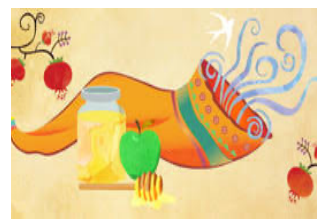
לשנה טובה תכתבו



# Congregation Beth Shalom

500 Harrington St. STE A1, Corona, CA 92878

Mail - PO Box 2737 , Corona, CA 92878  
(951) 734-4033 [www.CBSofCorona.org](http://www.CBSofCorona.org)



## ANNUAL YIZKOR BOOKLET

Congregation Beth Shalom is currently updating our Annual Yizkor booklet. This booklet is used at Yizkor services throughout the year including Yom Kippur, Sukkot, Pesach and Shavuot. Included in the book are meditations, supplementary readings, the names on the Memorial Board, and loved ones we wish to remember.

If you wish to honor the memory of a loved one, please fill out the form below with full information. It is customary that a minimum **donation of \$18 per name** accompany the return of this form. You may want to consider a larger donation at this time of year knowing it supports the synagogue in so many ways. Also the names on the Memorial Board plaques are always included in our Perpetual Memorial.

When you have completed this form, please mail to CBS 2-weeks prior to the High Holy Days with your payment to the address shown above. You may honor as many names as you wish.

In Memory of _____	Relationship _____
In Memory of _____	Relationship _____
In Memory of _____	Relationship _____
In Memory of _____	Relationship _____
In Memory of _____	Relationship _____
In Memory of _____	Relationship _____

Amount Enclosed: \_\_\_\_\_ via:  Check or  Credit Card *(a 3% fee will be added)*

Visa/MC # \_\_\_\_\_ Expiration date: \_\_\_\_\_ CCV: \_\_\_\_\_

Billing Address ZIP Code \_\_\_\_\_

Signature \_\_\_\_\_ Date \_\_\_\_\_

Submitted By (Name /Address / Phone) :

---



---



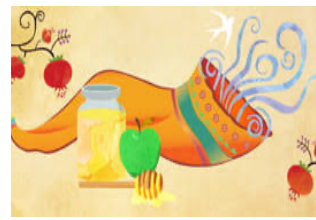
---



# Congregation Beth Shalom

500 Harrington St. STE A1, Corona, CA 92878

Mail - PO Box 2737 , Corona, CA 92878  
(951) 734-4033 [www.CBSofCorona.org](http://www.CBSofCorona.org)



## These additions apply to meeting inside the CBS facilities

### **For your Security:**

1. *Get familiar with emergency exits and plans.*
2. *Do not bring in large purses or packages (items are subject to inspection)*
3. *If you see something, like a knapsack lying against a wall unattended, say something.*
4. *Don't leave doors open to the outside—something as simple as propping open a door to get air as you are helping prepare Kiddush in your synagogue kitchen can result in a security breach.*
5. *Introduce yourself if you don't recognize someone at synagogue or see someone wandering around; create a culture of nicely asking what they are looking for and if you can help.*

### **Guidelines Continued for your safety.**

1. *If you do not feel well, have a cough, cold or are ill, please do not come to synagogue.*
2. *Masks are worn at your discretion.*
3. *Hand Sanitizer will be available at the doorway when entering the synagogue.*
4. *Refrain from hugging, shaking hands, touching other people in any way.*
5. *Take precautionary measures to ensure the safety for others.*



# Break-the-Fast

2023

5784



Join us for our  
Annual Yom Kippur Break-the-Fast  
**Where :** Congregation Beth Shalom  
**When :** Monday Sept. 25, 2023  
( following Yom Kippur evening services)

**Members:** \$15 adults, \$5 children 12 & under  
**Non-Members:** With ticket same as members;  
Without ticket \$20 adults, \$10 children 12 & under

How many will be attending? \_\_\_\_\_  
Amount paid for Break-the-Fast \$ \_\_\_\_\_

Names \_\_\_\_\_

*For reservations please contact no later than Sept. 20*  
CBS Ritual Chairperson, Jackie Williams, at  
[sirdots@yahoo.com](mailto:sirdots@yahoo.com) or call 714-296-4079

# Rosh Hashanah Lunch

**Saturday Sept. 16, 2023 @ 2PM**

*Join our congregation for lunch after Rosh Hashanah services at the Sizzler. It will be open menu and pay as you order. Reservations are not required.*



**Sizzler 1461 Rimpau Ave. Corona**  
Behind McDonalds on  
Magnolia Ave. & El Sobrante Rd.

*Remember with all our special requests from the waiters and our relationship with Sizzler, please give an appropriate tip to our wait staff.*

# Pre-Kol Nidre Dinner

**Sunday Sept. 24, 2023 @ 4PM**

*A Pre-Kol Nidre dinner is scheduled before services. It will be open menu and pay as you order.*

*Also being Yom Kippur, our holiest day, we should suggest that we keep our choices in line with Jewish dietary laws.*



**Sizzler 1461 Rimpau Ave. Corona**  
Behind McDonalds on  
Magnolia Ave. & El Sobrante Rd.

*Remember with all our special requests from the waiters and our relationship with Sizzler, please give an appropriate tip to our wait staff.*